

First connection to Bluetooth

1. Turn speaker on
2. Choose BT on remote control
3. Search for BT device on smartphone
4. Choose SA air 1 or SA air 9
5. Notice welcoming sound
6. Speaker is connected

Air





Welcome

Thank you for choosing SA. At System Audio, we want to excite people with amazing audio experiences. To get the most out of your new speakers, I recommend that you carefully read this guide before connecting your new SA speakers. Feel free to contact us if you have any questions.

Why Air is special

We love music and therefore we have a special focus on the sound. Air speakers are built of wood and the drive units are custom-designed to make the sound as life-like as possible. The Air technology consists of powerful digital amplifiers with built-in 32-bits floating point processors that deliver high quality sound in high resolution and without loss. This is all unique for speakers in this category.

Ole Witthøft, founder

Inside the box

SA air 1

- 1 x SA air 1
- 2 x front different grilles
- 1x White power cable (1.8m)
- 1 x remote control
- 2 x batteries
- 4 x rubber feet

SA air 9

- 2 x SA air 9
- 2 x front grilles
- 1 x White power cable (1.8m)
- 1 x White interconnect cable (5.5m)
- 1 x remote control
- 2 x batteries
- 4 x rubber feet

Good to know about your new speaker

Warranty

System Audio A/S provides a 2-year warranty against production defects and a 7-year warranty on drive units by registration at www.system-audio.com

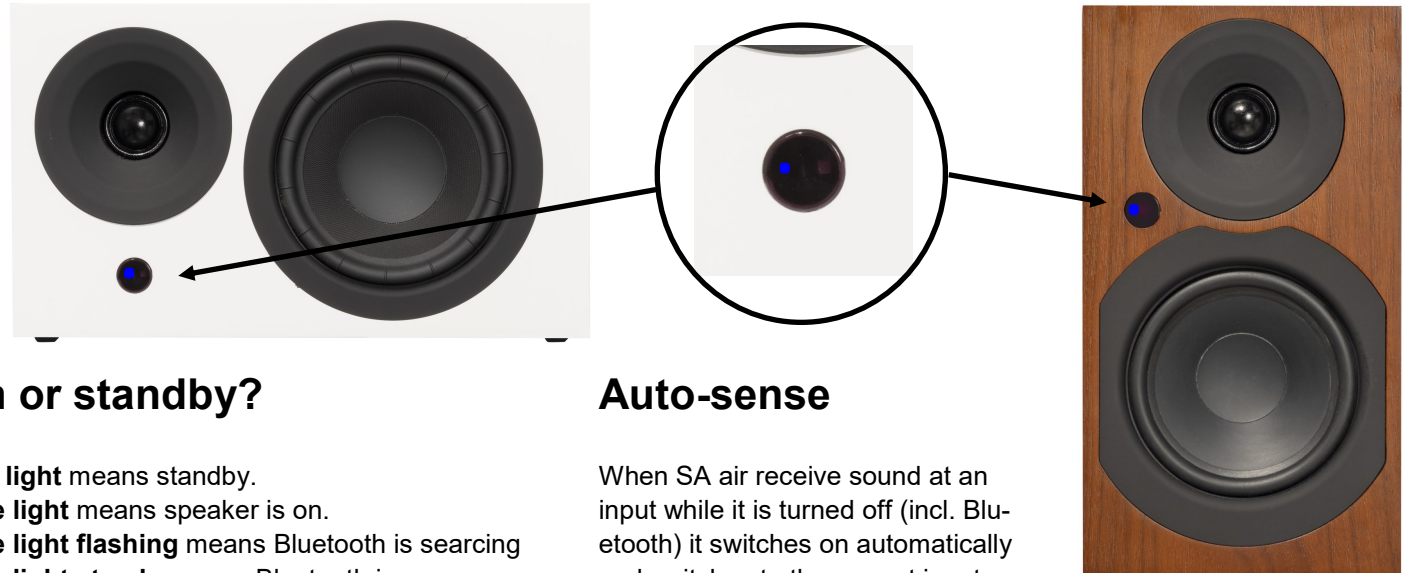
The warranty does not cover abuse or electronic circuits. Repairs and service are performed by the dealer or affiliated service workshops. Any changes to the design will void the warranty.

Burning-in your new speaker

Your speaker need a 10 hour burn-in period and have to play music for a few days to get the sound right:

Note:

- * Spend time experimenting with speaker placement
- * Never turn up the volume to a level where the sound is not clean
- * Remove front grilles for best sound



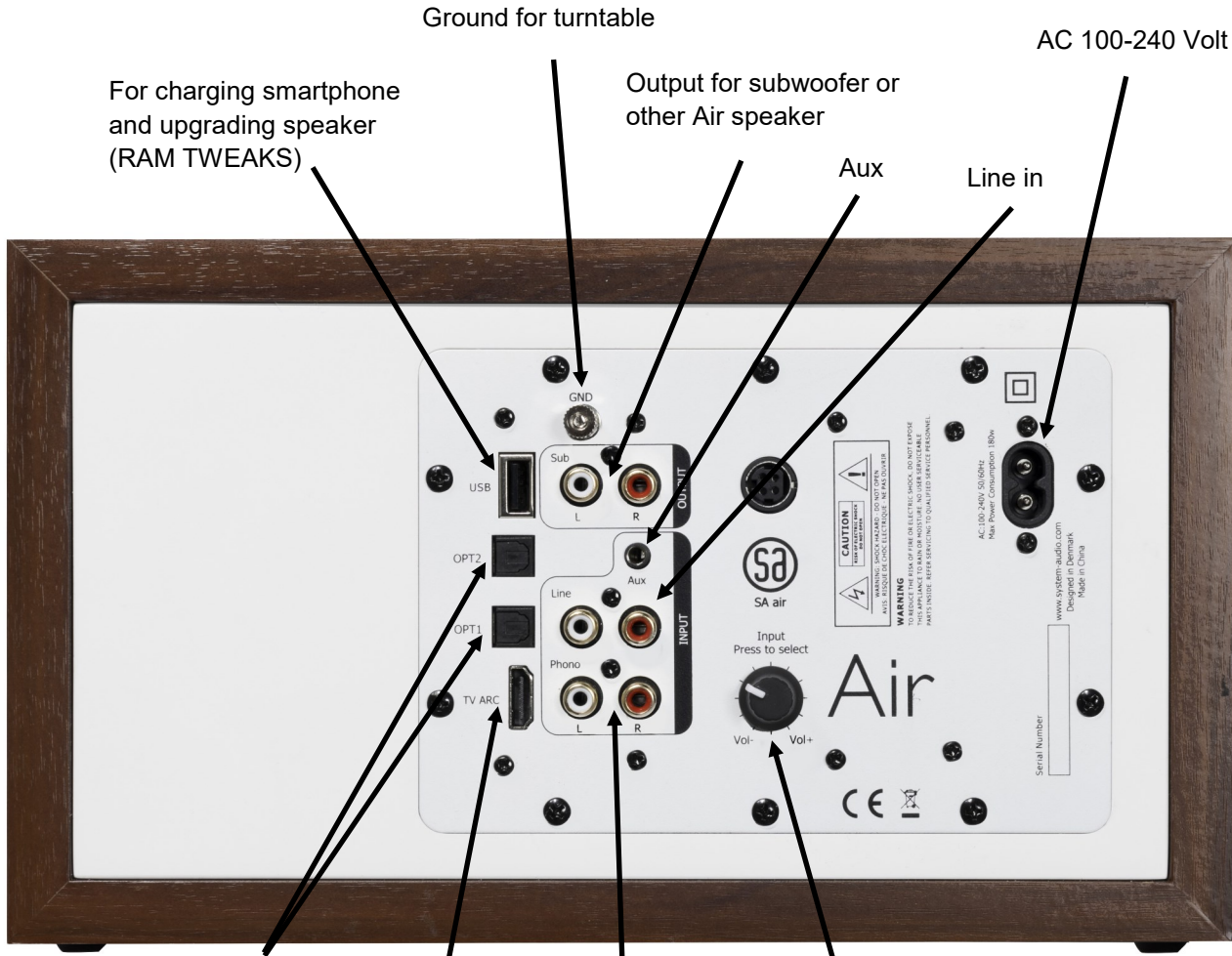
On or standby?

- Red light** means standby.
- Blue light** means speaker is on.
- Blue light flashing** means Bluetooth is searching
- Blue light steady** means Bluetooth is connected.
- White light.** Speaker is using other input than Bluetooth

Auto-sense

When SA air receive sound at an input while it is turned off (incl. Bluetooth) it switches on automatically and switches to the correct input.

SA air 1



For charging smartphone and upgrading speaker (RAM TWEAKS)

Ground for turntable

Output for subwoofer or other Air speaker

Aux

Line in

AC 100-240 Volt

Connect TV, CD, Blu-Ray or games console. Choose optical inputs for clear sound from digital media

Input for turntable (RIAA)

Button with three functions

Turn. Increase or decrease sound volume.
Short click. Switch between inputs.
Long click. Turn speaker on or in standby.

Connect HDMI cable from TV

On / Off

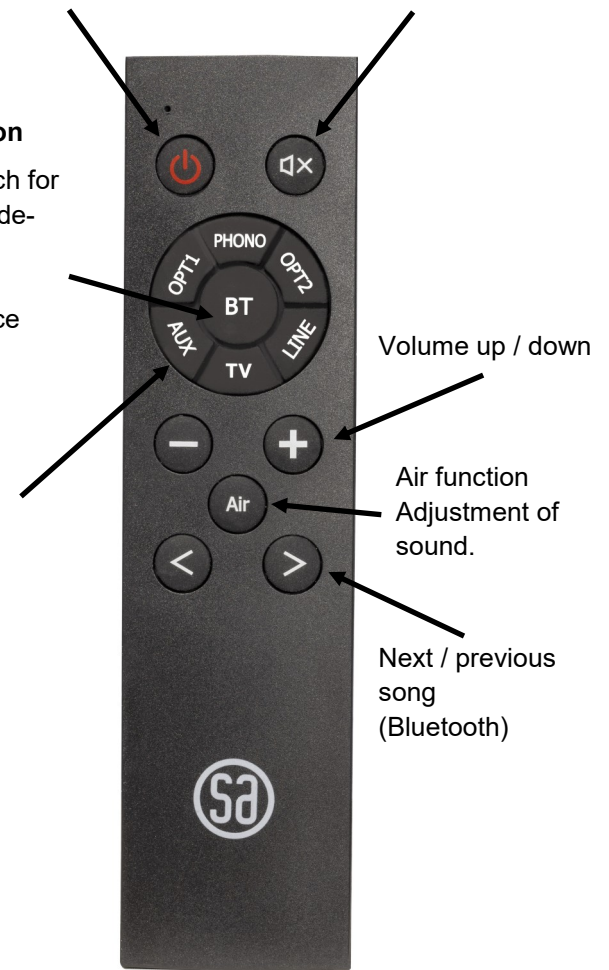
Mute

Bluetooth button

Activate to search for other Bluetooth devices.
 Long press = disconnect device

Input options

Optical 1
 Optical 2
 Phono (RIAA)
 TV
 Line in
 Aux



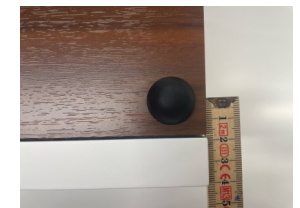
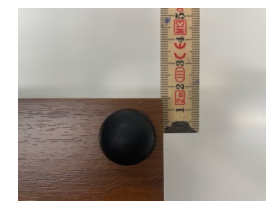
Volume up / down

Air function
 Adjustment of sound.

Next / previous song (Bluetooth)

Place rubber feet:

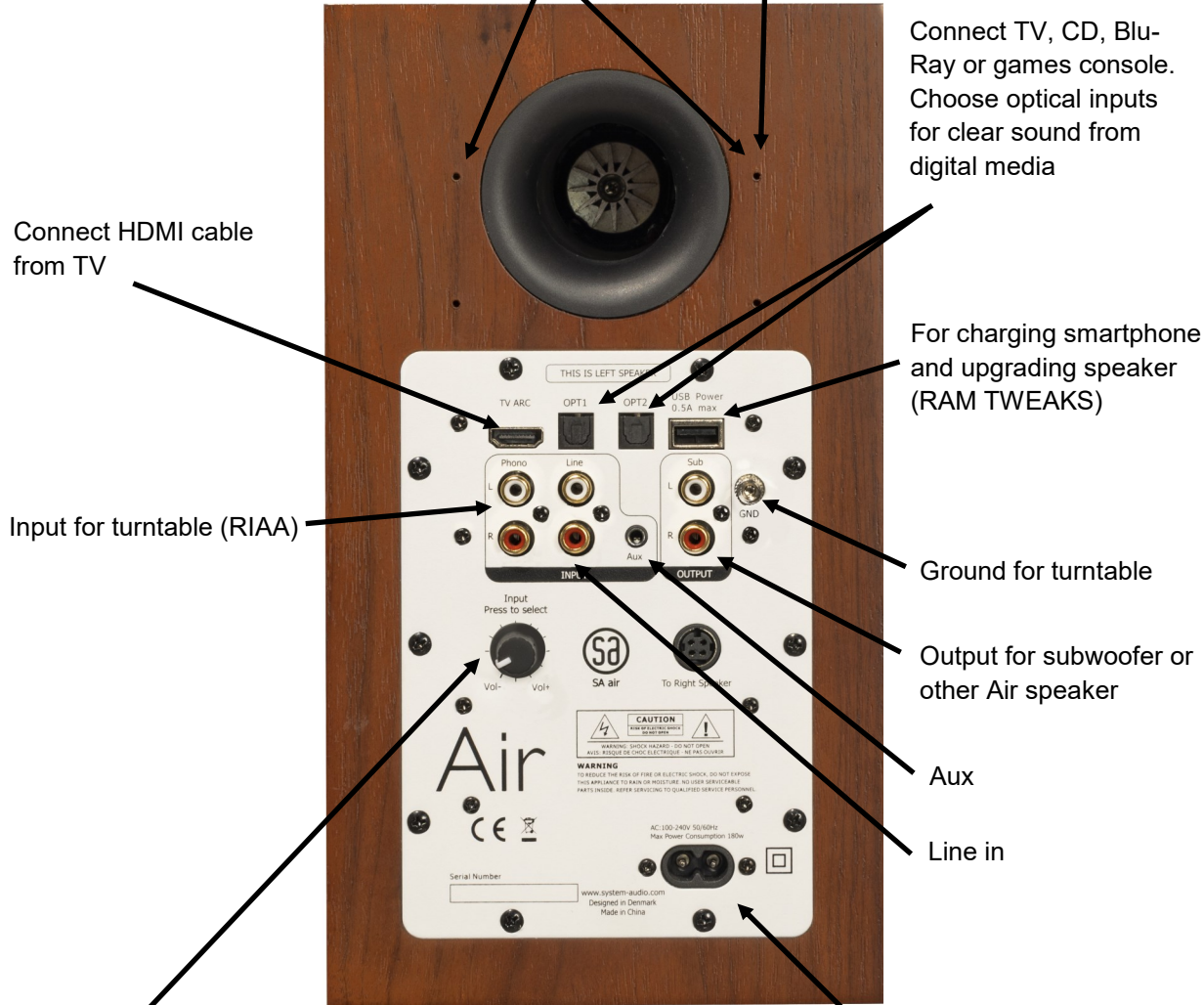
1.5 cm from sides
 1.5 cm from back
 4.0 cm from front



SA air 9



Holes for wall bracket W.5



Connect HDMI cable from TV

Input for turntable (RIAA)

Button with three functions

- Turn.** Increase or decrease sound volume.
- Short click.** Switch between inputs.
- Long click.** Turn speaker on or in standby.

AC 100-240 Volt

Connect TV, CD, Blu-Ray or games console. Choose optical inputs for clear sound from digital media

For charging smartphone and upgrading speaker (RAM TWEAKS)

Ground for turntable

Output for subwoofer or other Air speaker

Aux

Line in

On / Off

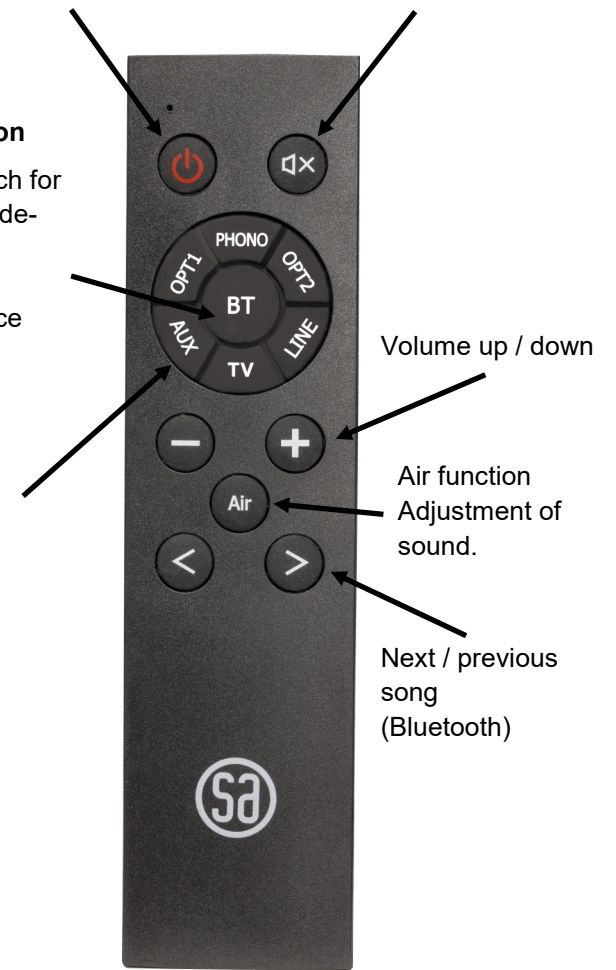
Mute

Bluetooth button

Activate to search for other Bluetooth devices. Long press = disconnect device

Input options

- Optical 1
- Optical 2
- Phono (RIAA)
- TV
- Line in
- Aux



Volume up / down

Air function Adjustment of sound.

Next / previous song (Bluetooth)